



MORE LIGHT

JOLD-200-CPNN-1L | JOLD-180-CPFN-1L

Open heat sink diode lasers: cw, passively cooled | with(out) collimation

Order code 562643 | Order code 563948

Features

- High optical output power up to 200 W cw
- Wavelength: 938 nm
- High efficiency, low divergences
- Long lifetime, high reliability

Applications

- Pumping of solid-state lasers
- Print applications
- Medical applications

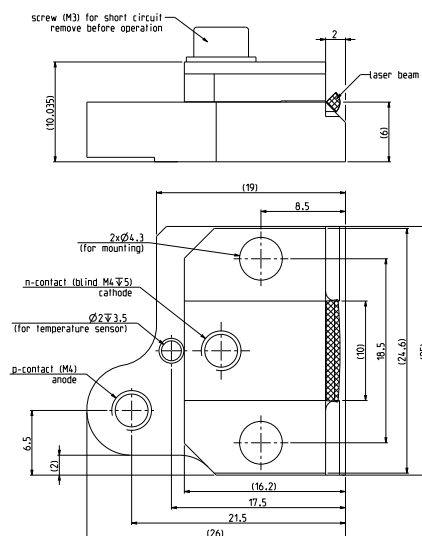
Open heat sink diode lasers | cw, passively cooled | with(out) collimation

JOLD-200-CPNN-1L | JOLD-180-CPFN-1L

Specifications (start of life)	JOLD-200-CPNN-1L Order code 562643	JOLD-180-CPFN-1L Order code 563948	
Operation Mode	cw, power modulation only between threshold and maximum current		
Maximum Optical Output Power	200		W
Maximum Optical Output Power after Collimation		180	
Center Wavelength at 25 °C	938	938	nm
Center Wavelength Variation at 25 °C	5	5	nm
Typical Spectral Bandwidth (FWHM)	3	3	nm
Maximum Spectral Bandwidth (FWHM)	5	5	nm
Typical Operation Current	206	206	A
Maximum Operation Current	224	224	A
Typical Threshold Current	24	24	A
Maximum Threshold Current	27	27	A
Typical Slope	1.1	1.0	W/A
Minimum Slope	1.0	0.9	W/A
Maximum Operating Voltage	1.6	1.6	V
Fast Axis Divergence (Full Power)		< 0.5	
Typical Fast Axis Divergence FWHM	23		°
Typical Fast Axis Divergence 86 %	30		°
Typical Fast Axis Divergence 95 %	42		°
Typical Slow Axis Divergence FWHM	6	6	°
Typical Slow Axis Divergence 86 %	6	6	°
Typical Slow Axis Divergence 95 %	7	7	°
Anode Connector	Threaded hole M4		
Cathode Connector	Threaded hole M4		
Weight	35	35	g
Operation Conditions	Cleanroom class ISO 5, non-condensing atmosphere		
Expected Lifetime	> 20,000 h (under qualification, constant current)		
Cooling			
Mounting	Via thermally conductive foil (thickness 25 ... 100 µm) on cooled surface (water cooled plate or TEC)		
Note	Do not mount via any paste-like media!		
Operation Temperature	15 ... 30 °C, measured with temperature sensor in heat sink		

See general user information!

Options on request: For additional designs or specifications please visit our website: www.jenoptik.com



pat.
EP2324544B1,
EP2291890B1,
CN102067395B,
US8649405B2,
JP5622721B2.

JENOPTIK Optical Systems GmbH
Goeschwitzer Strasse 25 | 07745 Jena | Germany
Phone +49 3641 65-3053 | Fax +49 3641 65-4011
laser.sales@jenoptik.com | www.jenoptik.com

