



Open heat sink diode lasers: cw, passively cooled | with(out) collimation JOLD-200-CPNN-1L | JOLD-180-CPFN-1L

Order code 562643 | Order code 563948

Features

- High optical output power up to 200 W cw
- Wavelength: 938 nm
- High efficiency, low divergences
- Long lifetime, high reliability

Applications

- Pumping of solid-state lasers
- Print applications
- Medical applications

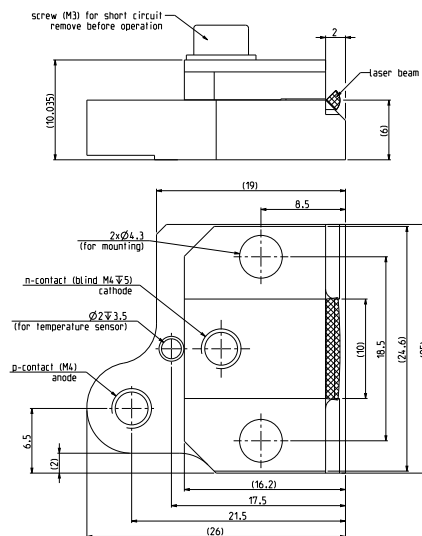
Open heat sink diode lasers | cw, passively cooled | with(out) collimation

JOLD-200-CPNN-1L | JOLD-180-CPFN-1L

Specifications (start of life)	JOLD-200-CPNN-1L Order code 562643	JOLD-180-CPFN-1L Order code 563948
Operation Mode	cw, power modulation only between threshold and maximum current	
Maximum Optical Output Power	200	W
Maximum Optical Output Power after Collimation		180
Center Wavelength at 25 °C	938	938
Center Wavelength Variation at 25 °C	5	5
Typical Spectral Bandwidth (FWHM)	3	3
Maximum Spectral Bandwidth (FWHM)	5	5
Typical Operation Current	206	206
Maximum Operation Current	224	224
Typical Threshold Current	24	24
Maximum Threshold Current	27	27
Typical Slope	1.1	1.0
Minimum Slope	1.0	0.9
Maximum Operating Voltage	1.6	1.6
Fast Axis Divergence (Full Power)		< 0.5
Typical Fast Axis Divergence FWHM	23	°
Typical Fast Axis Divergence 86 %	30	°
Typical Fast Axis Divergence 95 %	42	°
Typical Slow Axis Divergence FWHM	6	6
Typical Slow Axis Divergence 86 %	6	6
Typical Slow Axis Divergence 95 %	7	7
Anode Connector	Threaded hole M4	
Cathode Connector	Threaded hole M4	
Weight	35	35
Operation Conditions	Cleanroom class ISO 5, non-condensing atmosphere	
Expected Lifetime	> 20,000 h (under qualification, constant current)	
Cooling		
Mounting	Via thermally conductive foil (thickness 25 ... 100 µm) on cooled surface (water cooled plate or TEC)	
Note	Do not mount via any paste-like media!	
Operation Temperature	15 ... 30 °C, measured with temperature sensor in heat sink	

See general user information!

Options on request: For additional designs or specifications please visit our website: www.jenoptik.com



pat.
EP2324544B1,
EP2291890B1,
CN102067395B,
US8649405B2,
JP5622721B2.



JENOPTIK Laser GmbH | Goeschwitzer Strasse 29
07745 Jena | Germany
Phone +49 3641 65-3053 | Fax +49 3641 65-4011
laser.sales@jenoptik.com | www.jenoptik.com