


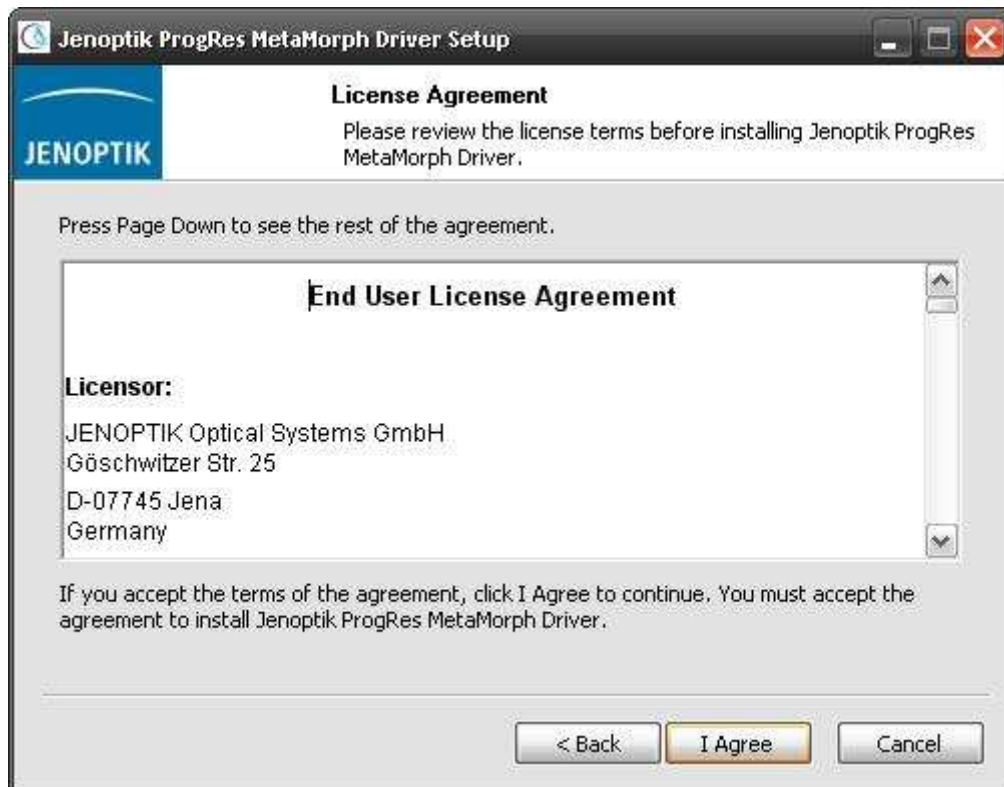
## Installation instructions for the Jenoptik MetaMorph driver:

1. Molecular Devices - MetaMorph software version **7.7.6** or higher must be previously installed.  
You can find all information of MetaMorph software at the following website:  
<http://www.moleculardevices.com/Products/Software/Meta-Imaging-Series/MetaMorph.html>
2. You can download the latest version of the Jenoptik MetaMorph driver at:  
[http://www.progres-camera.com/microscope-camera/downloads\\_software.html](http://www.progres-camera.com/microscope-camera/downloads_software.html)
3. **Attention:** Please unplug all ProgRes® camera before you start with the installation of the MetaMorph driver.
4. Start the installation of the Jenoptik MetaMorph driver via double click on the downloaded driver installer  and follow the instructions with "Next".

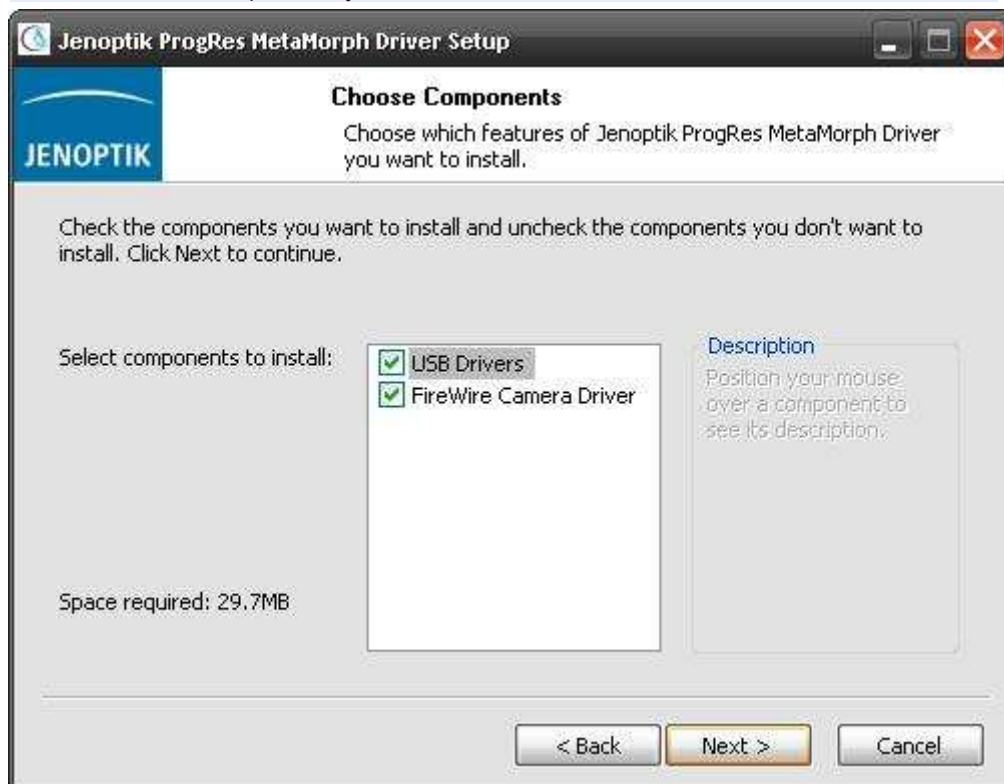


5. Please confirm the End User License Agreement with „I Agree“.

Note: The installation will be discontinued, if you disagree the End User License Agreement!

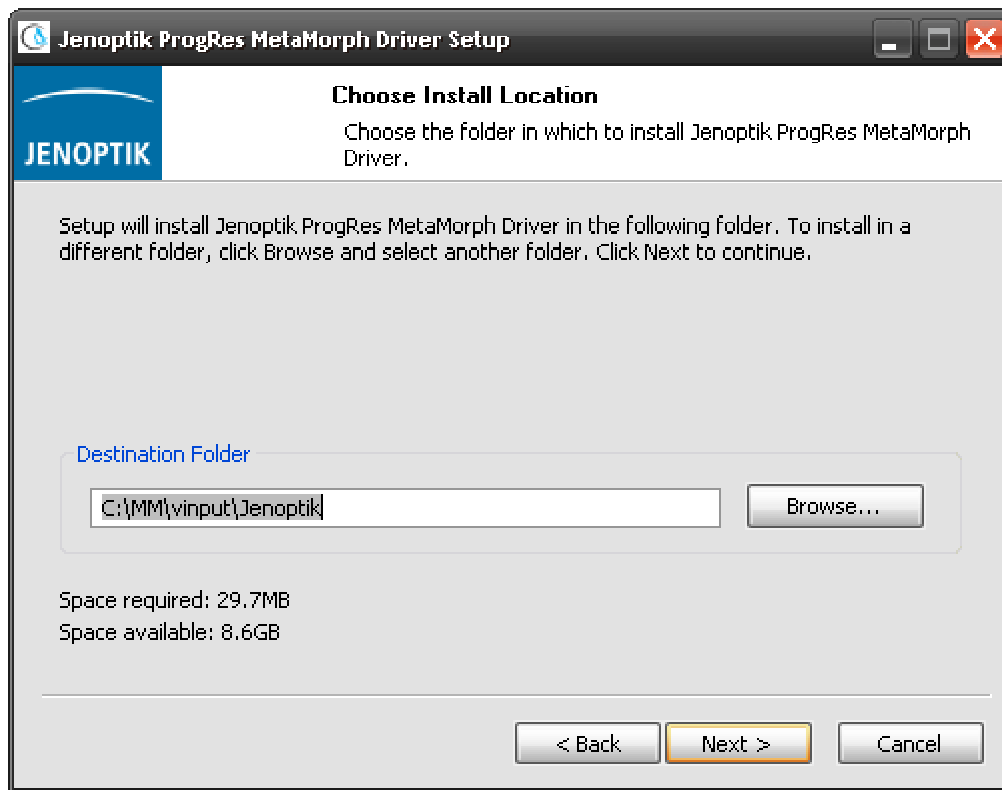


6. Please select the components you want to install and follow the installation with „Next“.

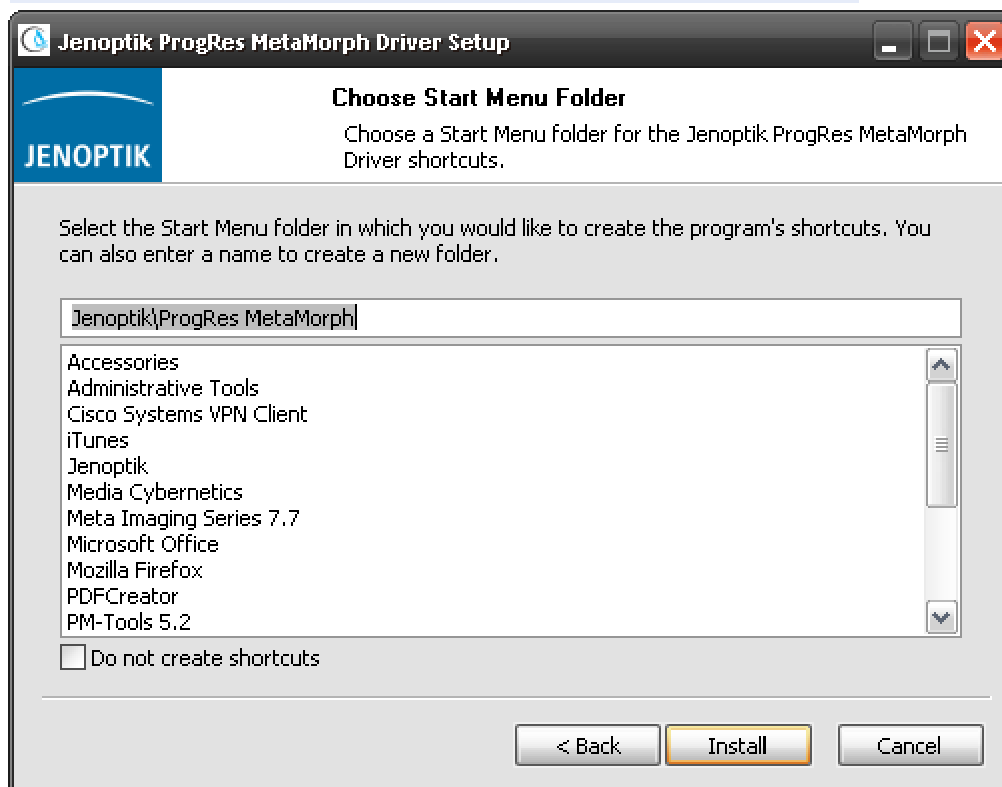


7. Please choose the install folder and follow the installation with „Next“.

**Please Note:** You have to install the MetaMorph driver in the folder: “...\inputJenoptik” of the MetaMorph software. Otherwise the driver will not work!

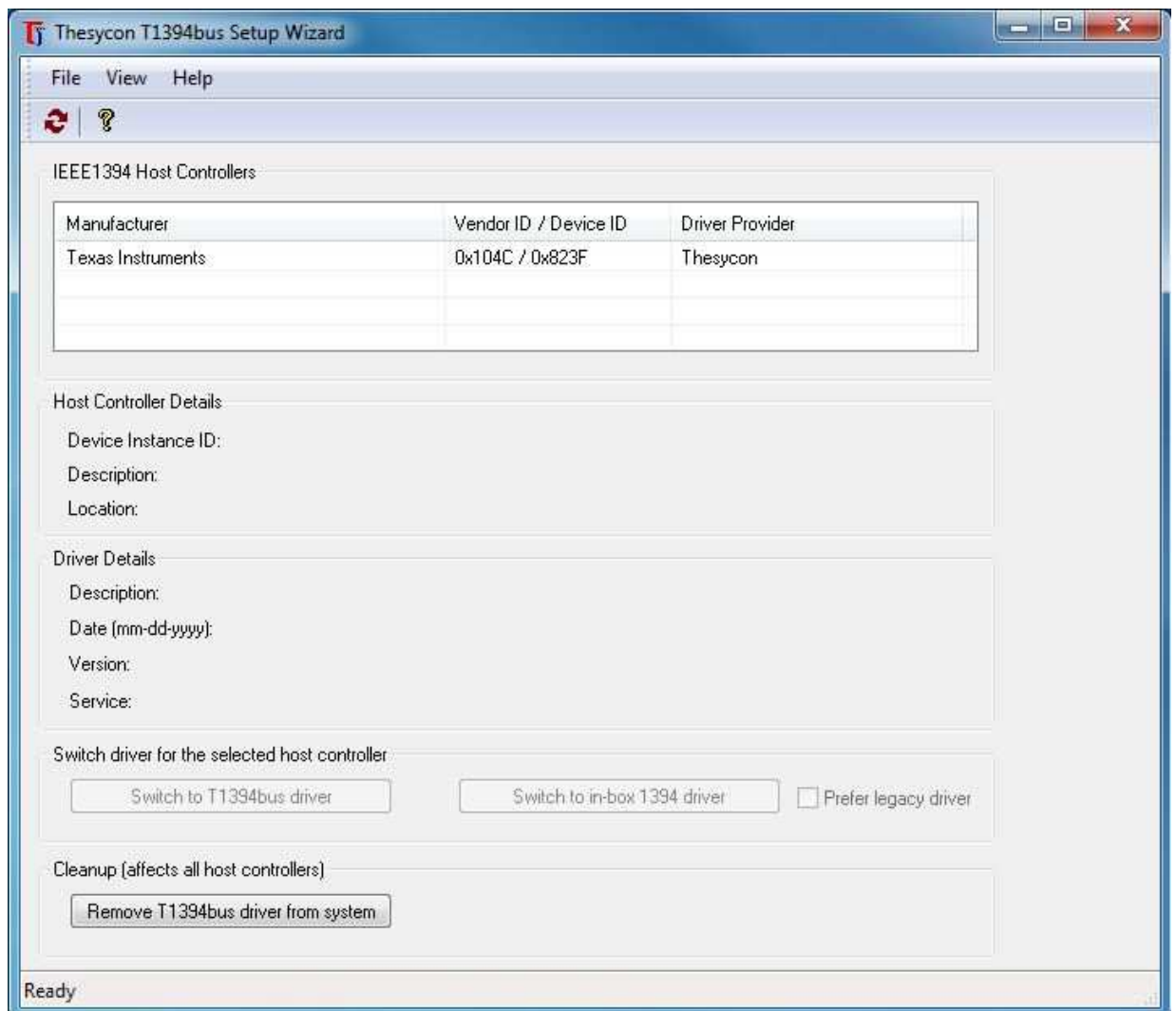


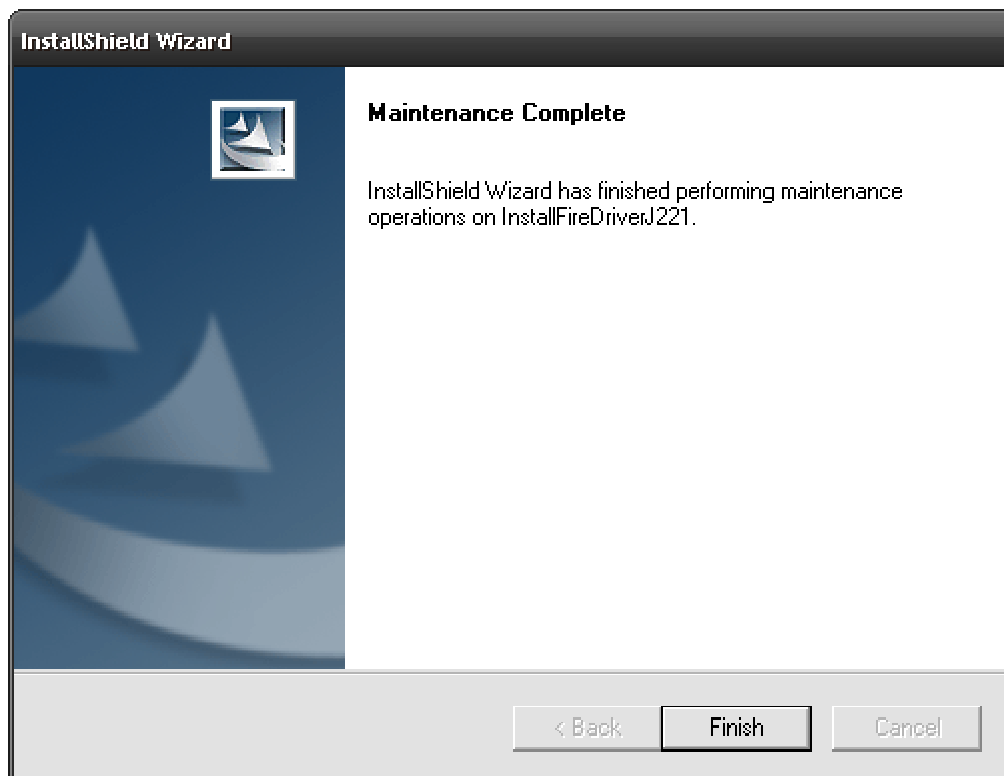
8. Please choose the Start Menu folder and follow the installation with „Next“.



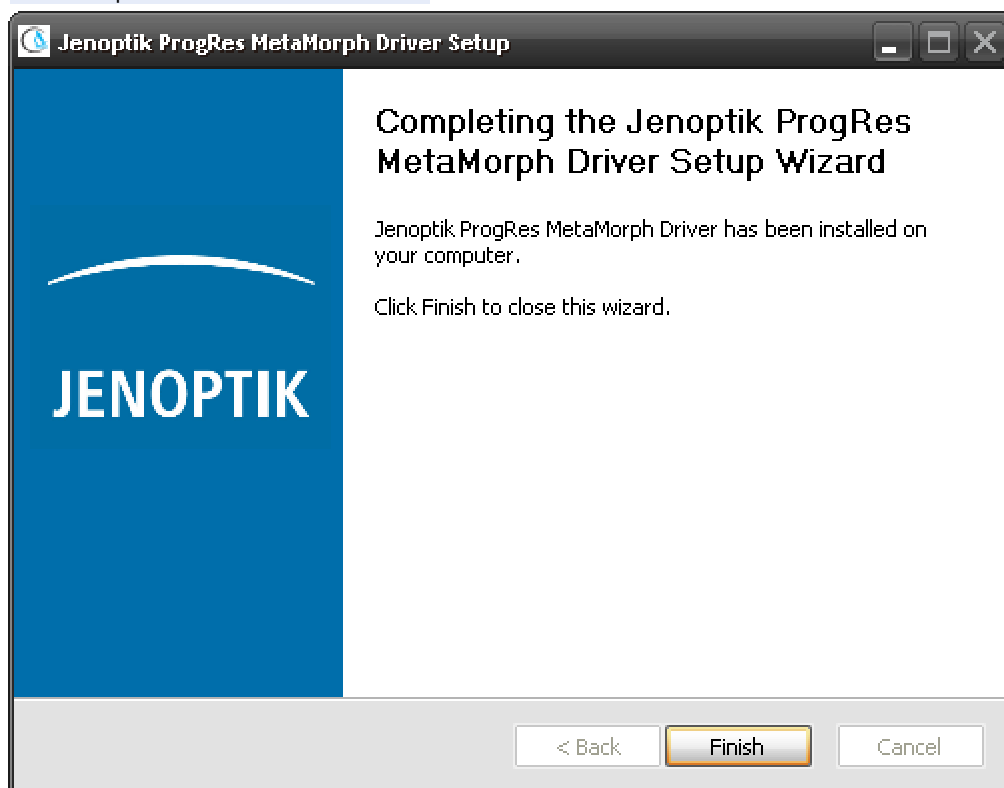
9. If you are using a Microsoft **64 bit** operating system, you have to install a special firewire bus driver before using a ProgRes® Firewire camera.

Detailed information regarding Firewire Bus driver installation you can find under the following link:  
<http://www.jenoptik.com/en-FAQ-DI-software-CapturePro-64-bit-busdriver>





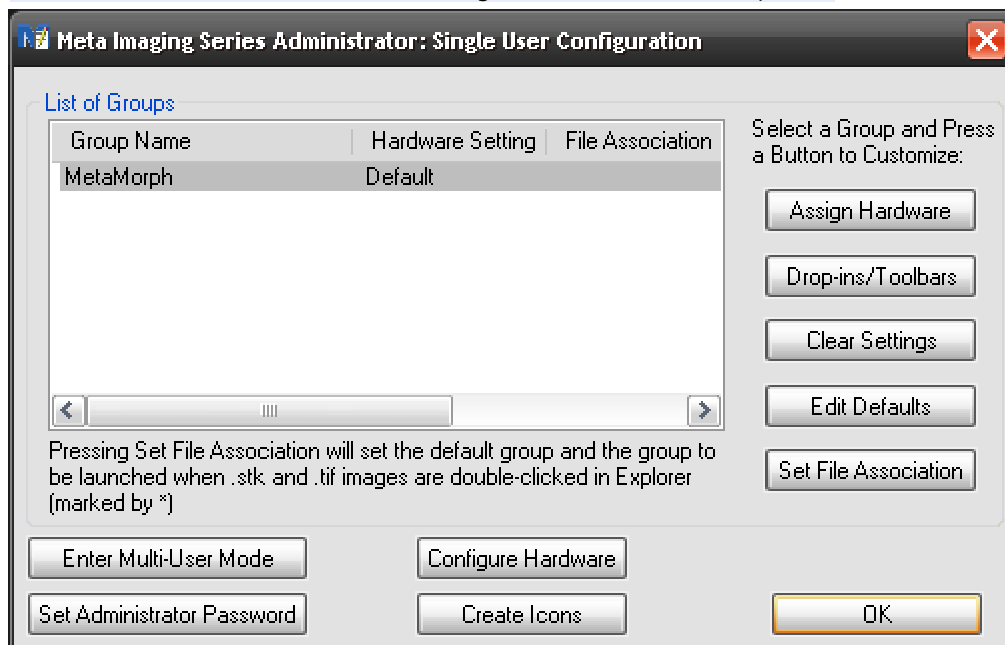
10. After successful installation of the camera device driver and bus drivers you can complete the MetaMorph installation with "Finish".



11. Now you can plug in the ProgRes® microscope camera to the PC and the operating system will setup all camera drivers automatically.
12. Before you can start working with the ProgRes® camera and the MetaMorph software, you have to configure the hardware of the ProgRes® camera you are using once.
13. Therefore you have to start the “Meta Imaging Series Administrator” tool of the MetaMorph software via double click on the icon.



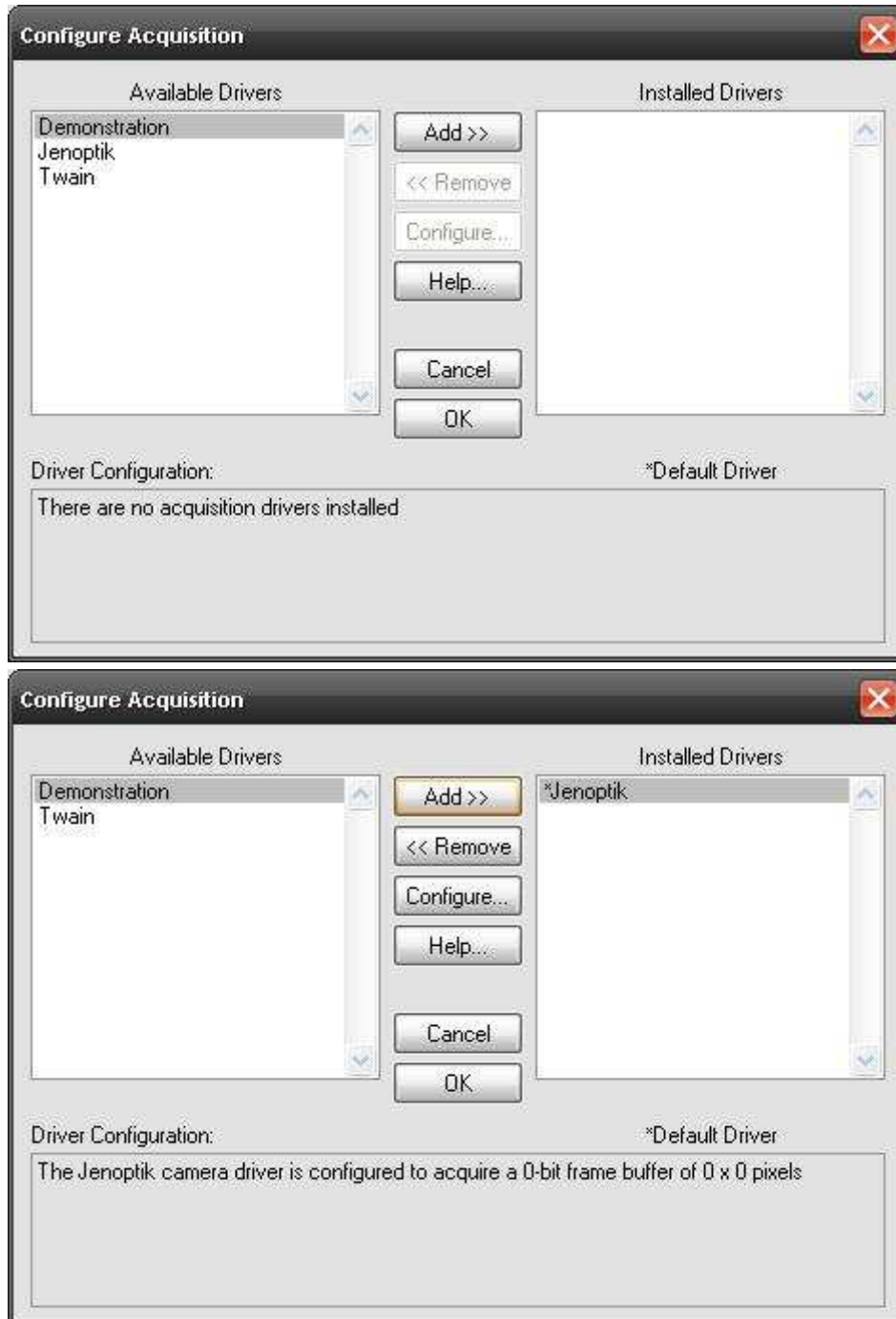
14. After opening the “Meta Imaging Series Administrator” tool you have to click on the “Configure Hardware” button. A new window “Configure Hardware” will be opened.



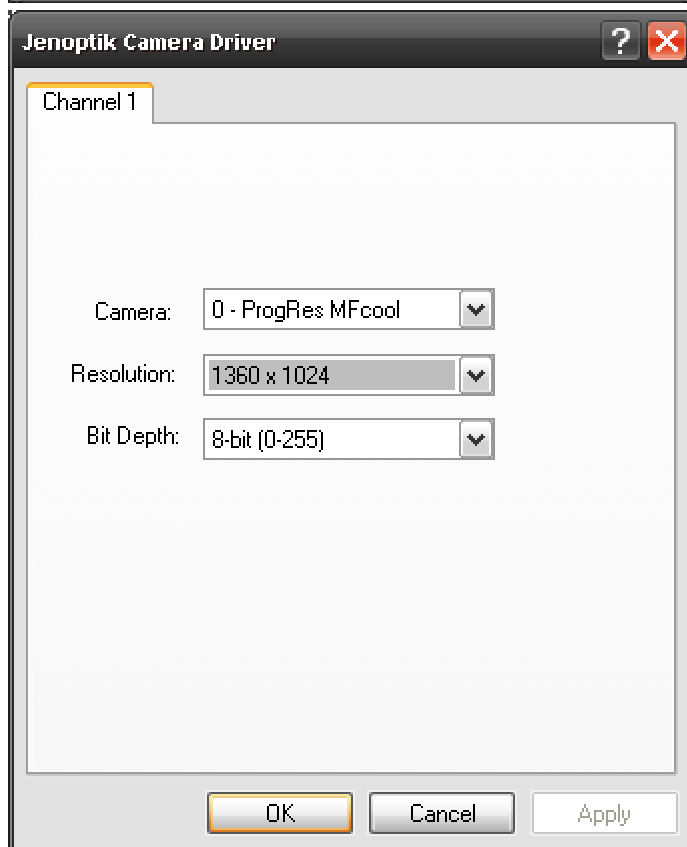
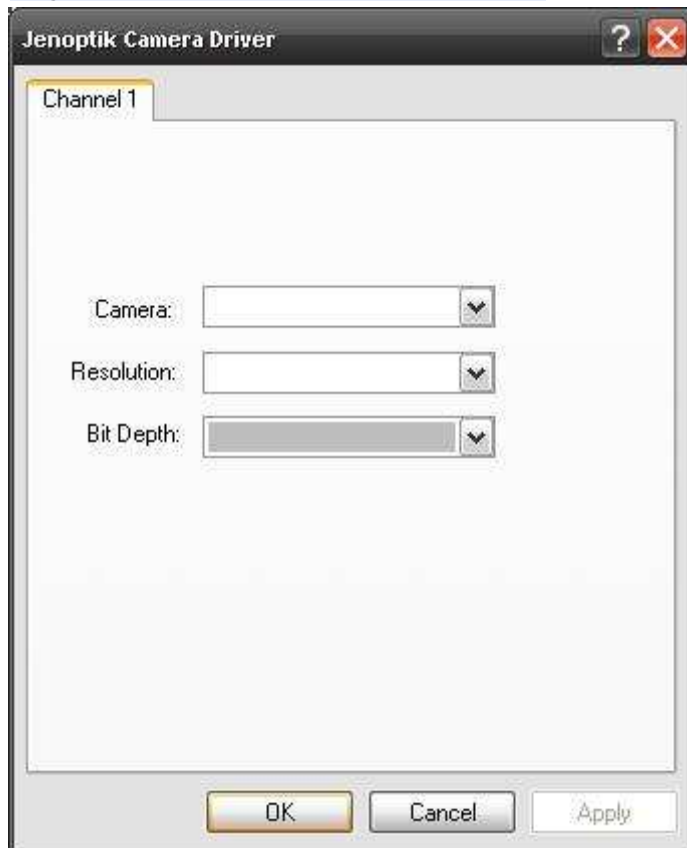
15. Please click on the “Configure Acquisition” button and again a new window will be opened.



16. Please choose the Jenoptik driver and add the driver to the "Installed Drivers".



17. Now you can double click on the Jenoptik driver or press “Configure” to configure the connected ProgRes® camera for the MetaMorph software.






18. After successful configuration of the ProgRes® camera you can close the Hardware Configure tool with the “OK” button.

19. Now you can start the MetaMorph software.



20. Please go to the “**Config Acquisition**” button  in the menu bar of the MetaMorph software and start the Jenoptik MetaMorph driver.

21. Now you can run the ProgRes® camera under Molecular Devices – MetaMorph software:

