



Enhancements for best performance with JENOPTIK GRYPHAX®

Additionally to our recommended system requirements, please find below enhancements to set-up your Laptop or Desktop computer for best performance with JENOPTIK GRYPHAX® USB 3.0 cameras.

There are two different options to enhance performance within JENOPTIK GRYPHAX® cameras:

Option 1: Deactivate “USB selective suspend settings” at **Power Options** to enhance the performance.

Option 2: Check correct installed driver version for USB 3.0 host controller extension card.

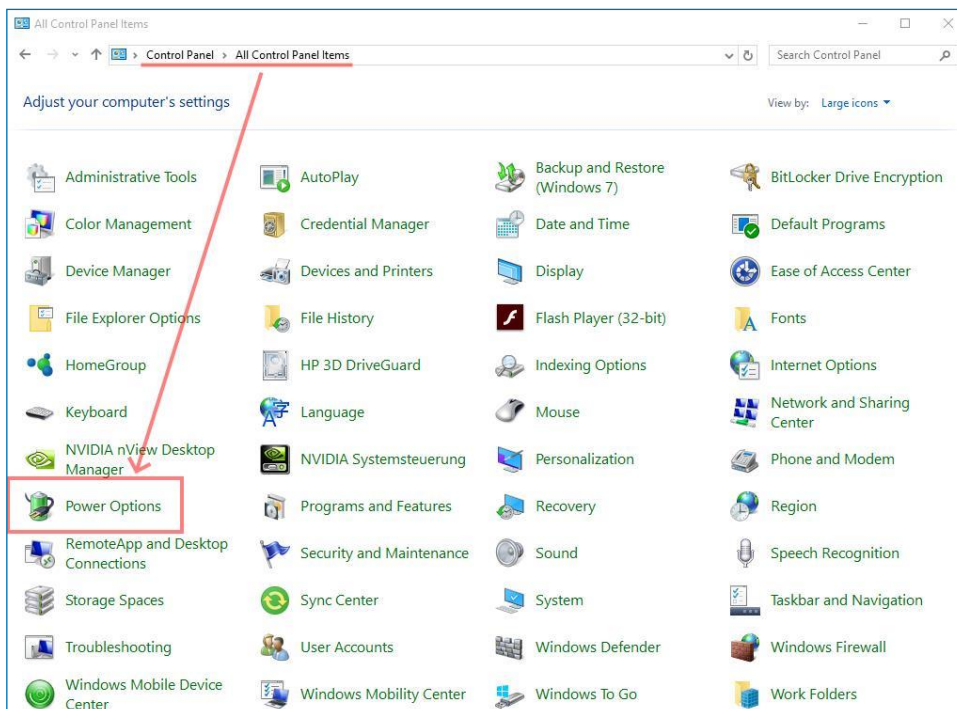
Option 1:

How can I deactivate “USB selective suspend settings” for USB host controller?

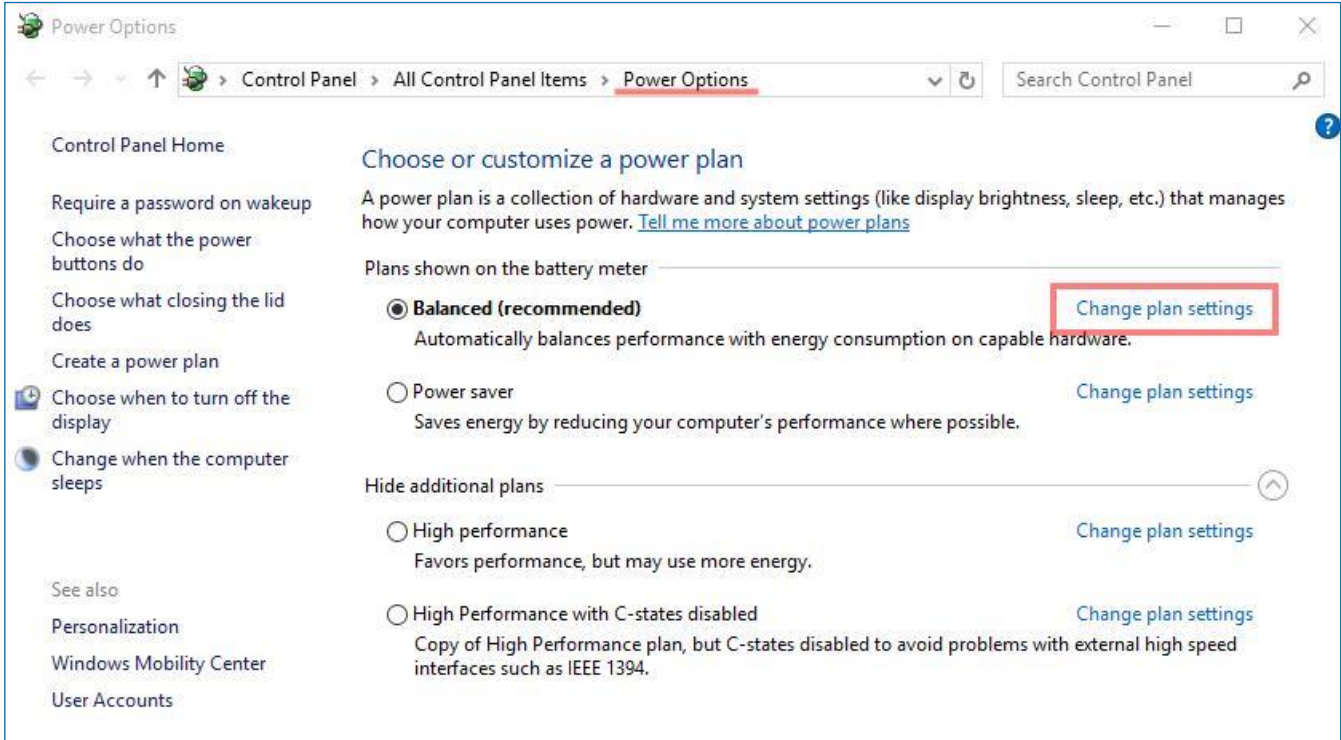
Answer:

Please find below enhancements to set-up your customers Laptop or Desktop computer for best performance within JENOPTIK GRYPHAX USB 3.0 cameras.

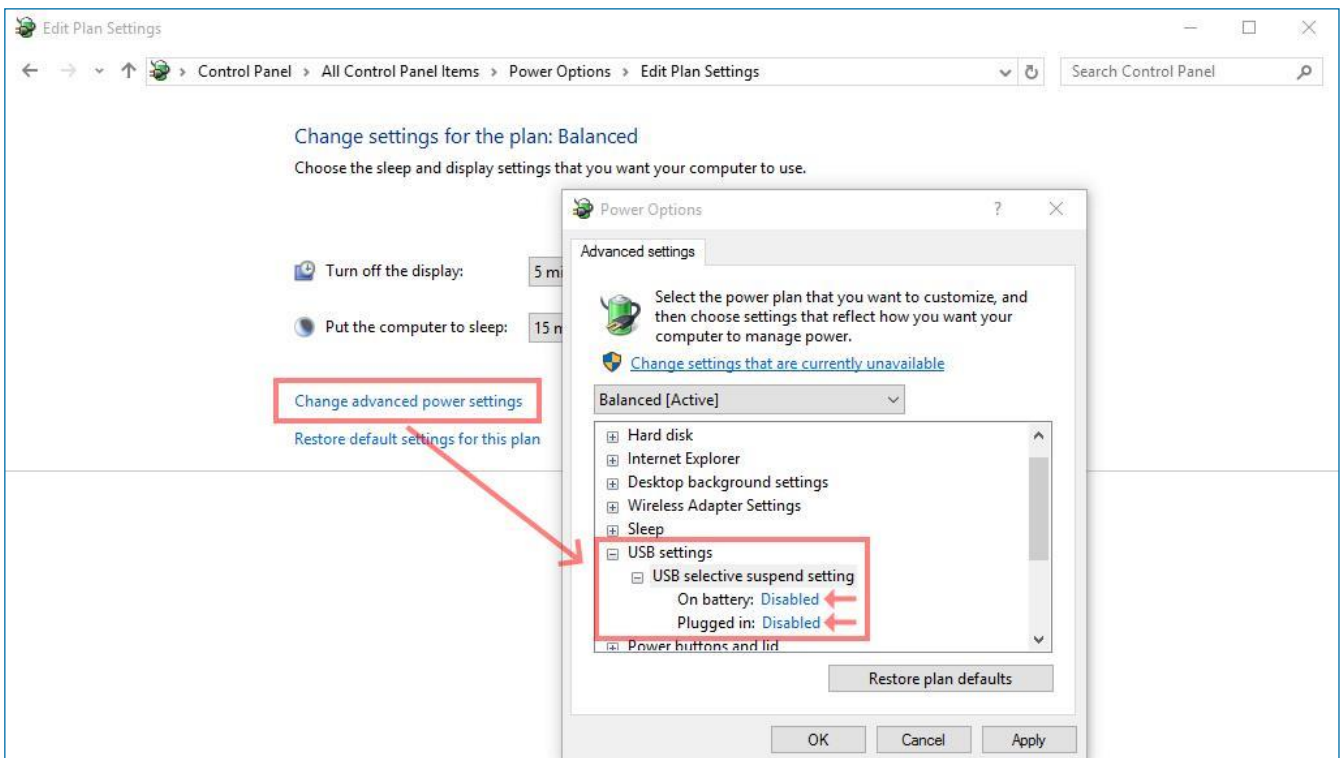
(1) Go to the **control panel** and open: “**Power Options**” on your computer



- (2) Select your current or preferred power plan and go to "Change plan settings" of your current or preferred used power plan.



- (3) Go to option: "Change advanced power settings" and deactivate the USB settings: "USB selective suspend settings".



Option 2:

How do I choose the correct driver for USB 3.0 host controller extension card?

Answer:

To secure stable connected USB 3.0 cameras we strongly recommend using the latest driver version for USB 3.0 host controller cards!

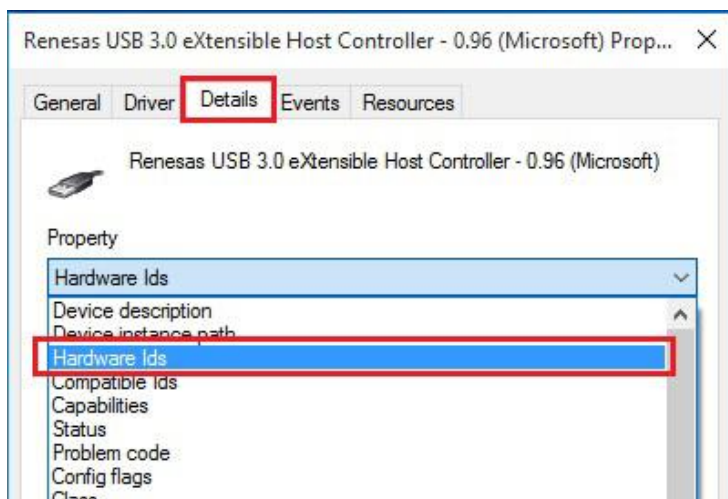
Jenoptik recommends and offers (on price list) USB 3.0 host controller extension cards equipped with “**Renesas**” chipset only! Please note, for those cards are two different drivers available, depending on the date of purchase.

For **on-board** USB host controller please take care the latest driver versions are installed to secure stable connection!

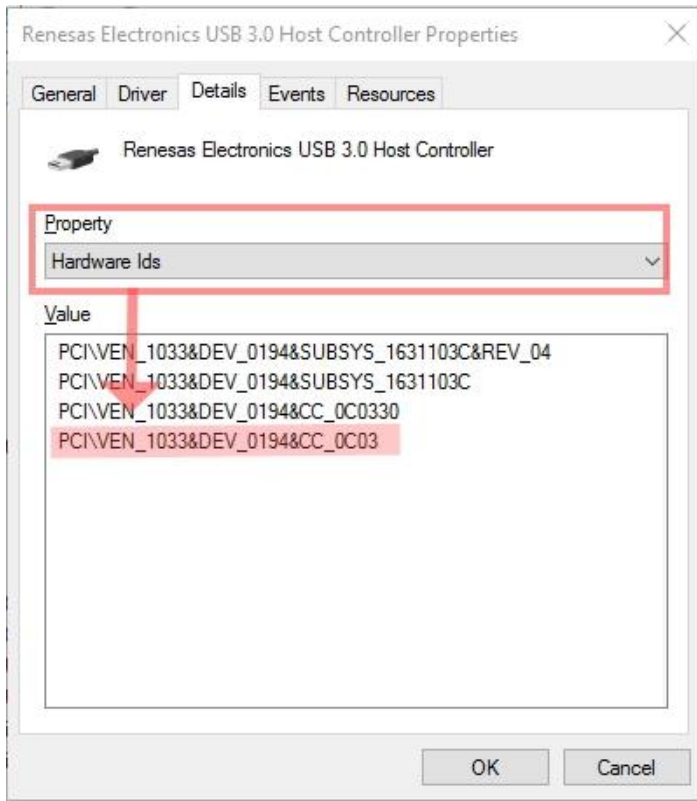
- (1) Open “**device manager**” from control panel and go to the “**USB 3.0 host controller card**” entry.



- (2) Open USB 3.0 host controller card properties and navigate to the “**details**” tab. Change the Property to: “**Hardware Ids**”



(3) To choose the correct driver version at step 4 below, please remember the first 21 figures at value



(4) Choose the correct driver version for your used USB 3.0 host controller card (Hardware Id). As example the extension cards with equipped "Renesas" chipset below:

For Operation System: Windows 7, 10 (64-bit)

Driver version 1 for **PCI\VEN_1912&DEV_0015:**

USB 3.0 host controller PCI-express cards purchased [10/16/2012 and after](#) are [µPD720202](#) based and require the [3.0.23.0 driver package](#). These units will be presented in device manager with the VID/PID: PCI\VEN_1912&DEV_0015

Please download latest from driver from manufacturer web site or install from the enclosed storage medium of the delivery.

Driver version 2 for **PCI\VEN_1033&DEV_0194:**

USB 3.0 host controller PCI-e cards purchased [before 10/16/2012](#) are [µPD720200](#) based and require the [2.1.39.0 driver package](#). These units will be presented in device manager with the VID/PID: PCI\VEN_1033&DEV_0194

Please download latest from driver from manufacturer web site or install from the enclosed storage medium of the delivery.



Watch our video tutorials.

[VIDEO TUTORIALS](#)

HELPFUL? We appreciate your feedback.

[FEEDBACK](#)

We looking forward to hearing from you and remain sincerely,

Your JENOPTIK GRYPHAX® Team