



21. Grid mode



Grid mode of JENOPTIK GRYPHAX® software

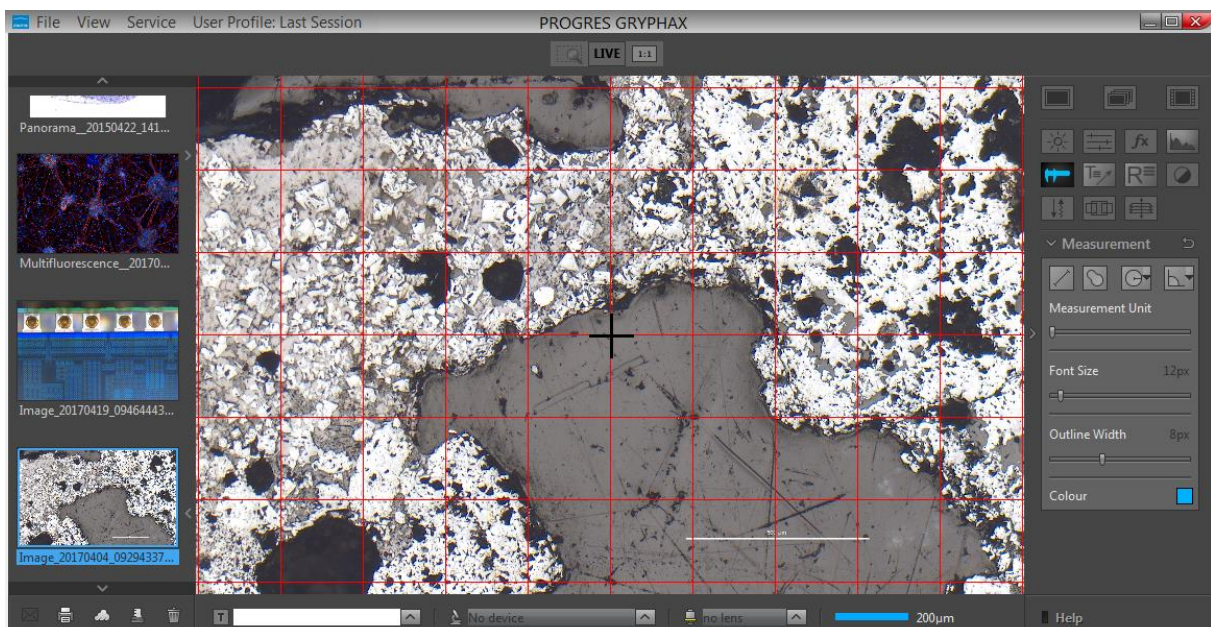
The “**Grid mode**” of JENOPTIK GRYPHAX software enables user to overlay a Grid or crosshairs over the live image stream or recorded items from Gallery.

General description:

The *Grid mode* is part of the JENOPTIK GRYPHAX software. It enables user to overlay a grid or crosshairs over the live image stream or recorded items from Gallery. The displayed grid or crosshairs will be not saved to the recorded images or video files.

Use the grid to adjust the alignment of specimen to the image stream of camera. See also example below. Additionally, the crosshairs will display the center of the image.

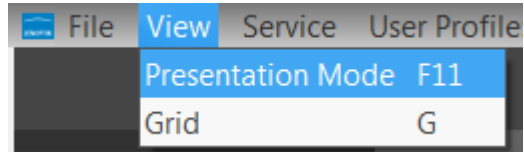
Grid mode activated:





21.1 Start Grid mode:

To **start** the *Grid mode* use the keyboard key (**G**) or start by using the title bar menu from software under View / option "Grid".

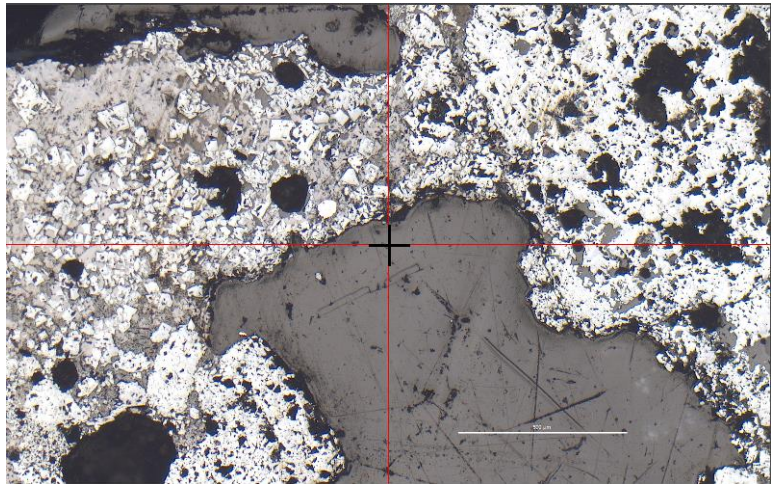


Note: This submenu is enabled if any meaningful image/video is shown in the image window.

Change line distance:

To **change** the line distance of *Grid* use the mouse wheel and scroll up to enlarge the factor or scroll down to lower the factor.

Additionally, a **crosshairs** would be displayed only if the line distance factor reach the maximum image width or height. See adjacent screen shot.



Note: The color of cross is fixed to black.

Change color:

To **change** the color of Grid, open Preferences from title bar and change the color of Grid section under Preferences / Elements of Style / Grid

Leave Grid mode:

To **leave** the *Grid mode* use the keyboard key (**G**) or by using the title bar menu from software under View / Grid.

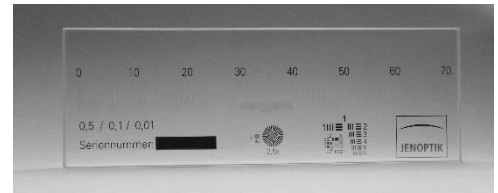
Note: Last used line distance factor and grid colour will be stored at software settings and are reused after start of *Grid mode* again.



Example for Grid mode:

To reach to best results with e.g. *Panorama tool* you have to [adjust the alignment](#) of camera related to the stage.

To adjust the correct alignment you can use the Grid function and the JENOPTIK GRYPHAX® calibration slide / stage micrometer (order number: 648806).



Grid overlay on live image of stage micrometer to adjust alignment:

