



## 15. Report tool



# Report tool of JENOPTIK GRYPHAX® software

The “[Report tool](#)” of JENOPTIK GRYPHAX software enables user to review and export measurement data, software settings and image meta-data directly at JENOPTIK GRYPHAX software.

### General description:

The “[Report tool](#)” is part of the JENOPTIK GRYPHAX software. It enables user to review and export measurement data from live and recorded images, current software settings and media files meta-data directly at JENOPTIK GRYPHAX software.

### Preparation:

To use all feature of *Report tool*/you have to calibrate your microscope objectives in advance! Otherwise, the *Report tool*/cannot be display measurement data information. To create measurement calibration you have to open software Preferences and navigate to option “Device Configuration”.

To calibrate the microscope you can use the JENOPTIK GRYPHAX® [calibration slide / stage micrometer](#) (order number: 648806).

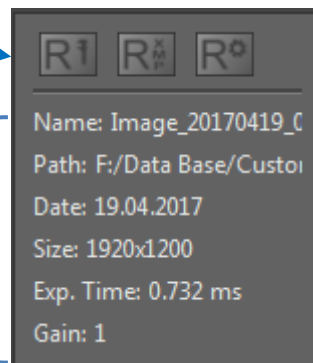


### Overview:

Report tool contains the data tables and views for:

- Measurement data table & statistics
- Image meta-data view
- Software settings view


[Show](#) image information from selected media file








## 15.1 Start Report tool:

To **activate** the *Report tool* open the *Toolbar* by pressing the arrow  on right-hand software site or use keyboard short cut (**ctrl / cmd + T**)

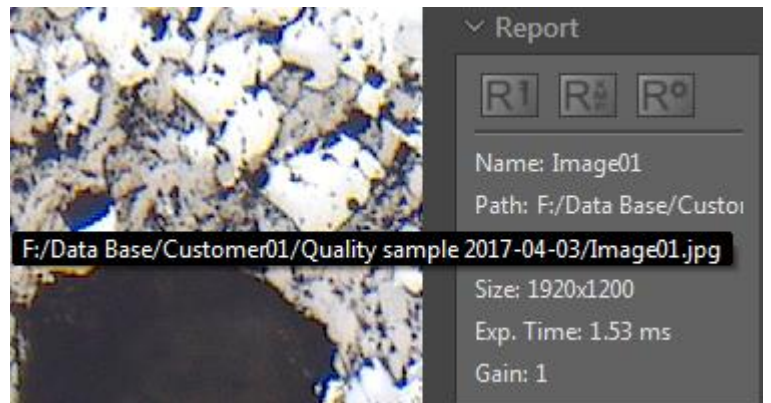
Click to the Report icon  at the toolbar, the report widget will be opened and contains the following tools and information of live preview or from selected media file from Gallery:

-  **Measurement data table** – shows measurement data and statistics for each measurement methods and offers option export as file
-  **Image meta-data view** – shows image meta-data information and offers option export as file
-  **Software settings view** – shows software settings and offers option export as file
- **Name:** – display media file name of selected media file
- **Path:** – display media file destination folder of selected media file
- **Date:** – display creation date of selected media file
- **Size:** – display media file resolution of selected media file or live preview
- **Exp. Time:** – display used exposure time of selected media file
- **Gain:** – display used Gain value of selected media file

Note: Image size is shown at image information only at report widget, during display of live preview from camera.

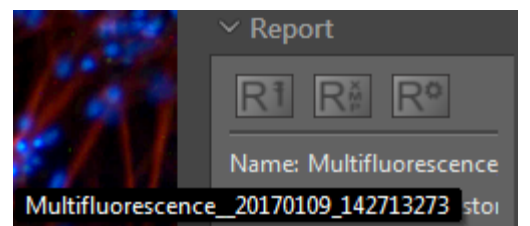
### Show destination path:

To **display** the destination path of saved media files from Gallery without *Tree view tool* you can use the path information of *Report* widget. Hold the mouse pointer over path of *Report* widget until complete path will be displayed (hover).





### Show name:

To **display** the complete name of saved media files from Gallery without *Tree view tool* you can use the name information of *Report* widget. Hold the mouse pointer over name of *Report* widget until complete name will be displayed (hover).

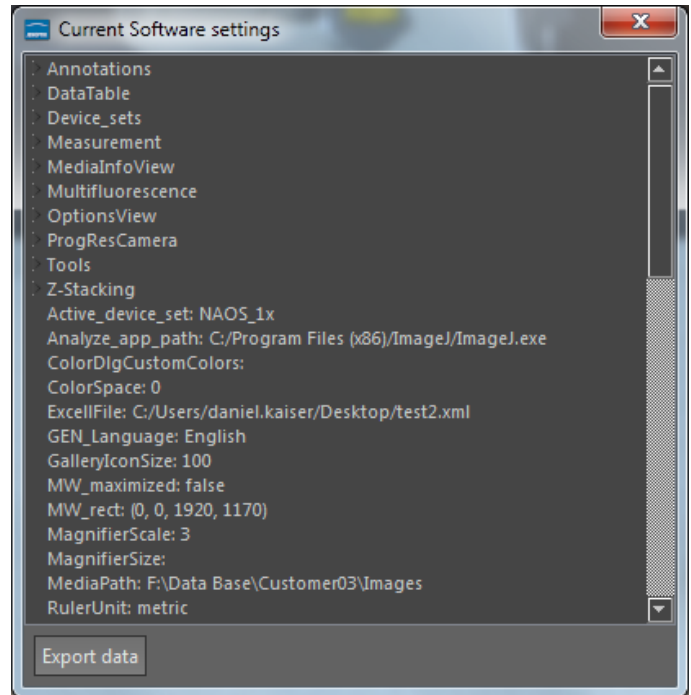


## 15.2 Software settings view:

All software settings of JENOPTIK GRYPHAX software are stored permanently during software operation. The current software settings can be reviewed and exported by report tool.

To [view](#) current software settings of software, open Report tool  and activate the Software settings view: .

To [export](#) software settings, press button: "Export data" to save all current software settings into \*.txt file.





## 15.3 Measurement data table:

With *Measurement data table* of Report tool user can review measurement values, measurement statistics or export all measurement data from live or recorded images into file.

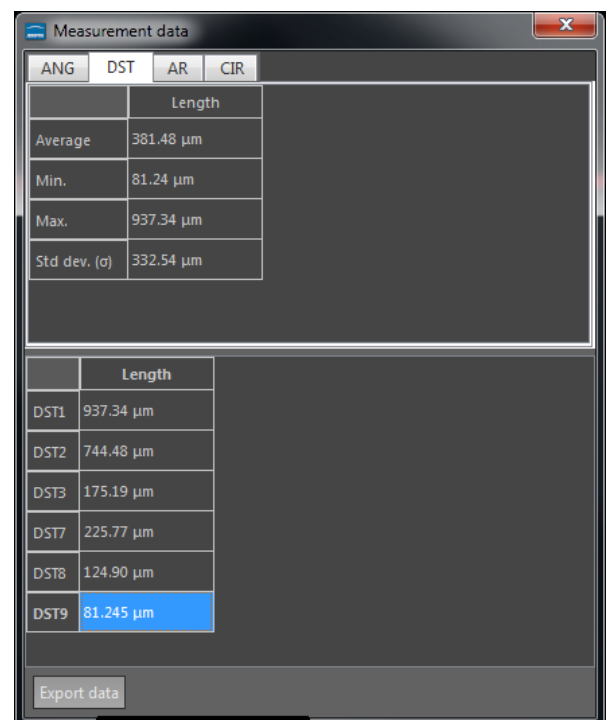
The *Measurement data table* contains the following [statistics](#) related to selected measurement type:

- Average value
- Minimum value
- Maximum value
- Standard deviation ( $\sigma$ )

To [view](#) measurements objects, open Report tool  and activate the Measurement data table: .

To [export](#) measurements data, press button: "Export data" to save all measurements data information into \*.xml file.

Note: To [open](#) exported \*.xml file a 3<sup>rd</sup> party software like MS Excel or comparable is needed.



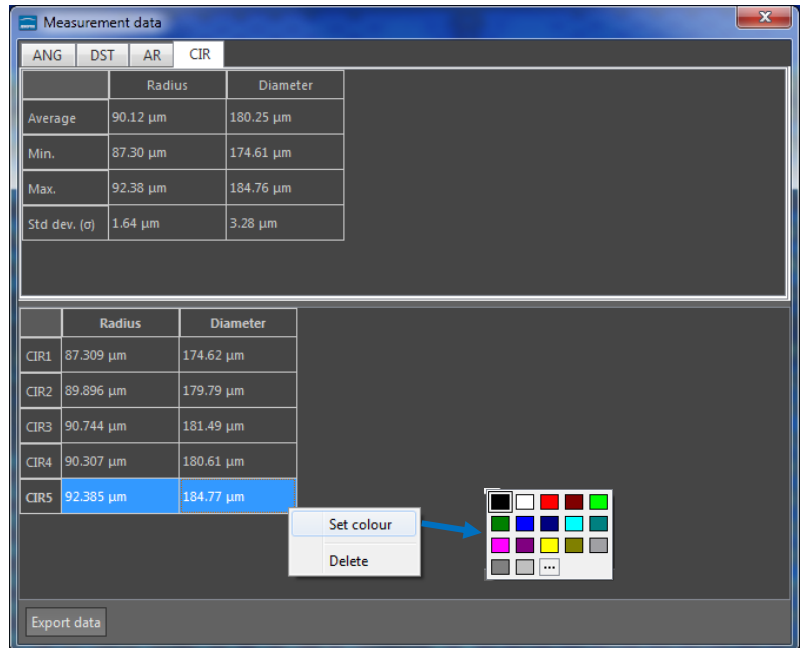


### 15.3.1 Select or delete measurements at data table:

As long as the displayed image is not saved by "REC" button. It is possible to select, change color or delete measurements from data table directly.



To **select** make a left-hand mouse click at the according measurement. The measurement will be marked in blue and displayed semi-transparent at the image window. Also selected measurements from image window will be marked at data table as well.

To **change** color or **delete** make a right-hand mouse click. A submenu will be opened.



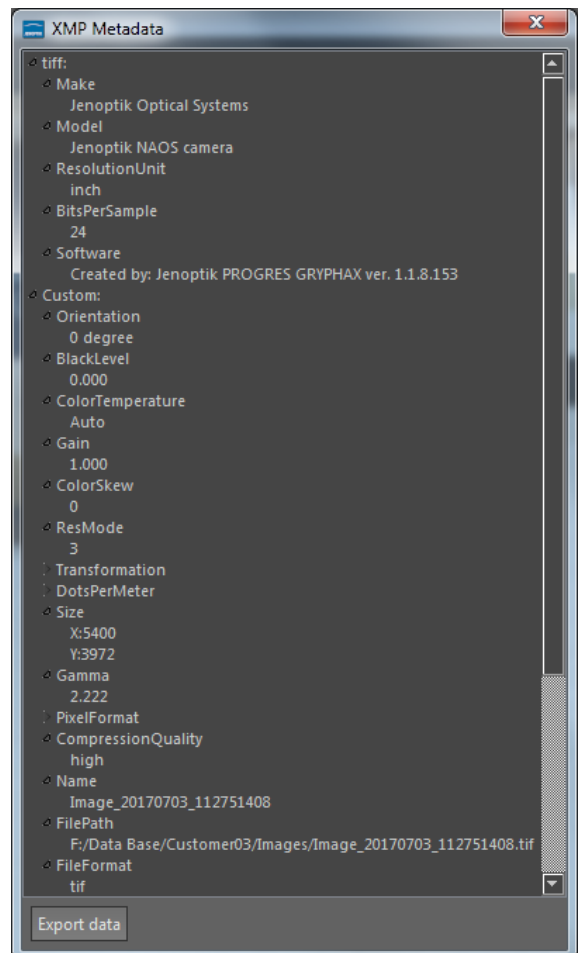
### 15.4 Image meta-data view:

All files recorded by JENOPTIK GRYPHAX software are saved with meta-data information depending on file format. The meta-data are saved as XMP meta-data and can be **reviewed** and **exported** by report tool.

To **view** meta-data of media files, open Report tool  and activate the Image meta-data view: 

To **export** image meta-data, press button: **"Export data"** to save all meta-data information into \*.xml file.

Note: To **open** exported \*.xml file a 3<sup>rd</sup> party software like MS Excel or comparable is needed.





### Example file:

Example for exported measurement data file opened by MS Excel.

	A	B	C	D	E	F	G
1	Media file:	F:/Data Base/Customer03/Images/Image_20170419_094644439.jpg					
2							
3	Object name	Radius	Diameter				
4	CIR1	87,309 µm	174,618 µm				
5	CIR2	89,896 µm	179,791 µm				
6	CIR3	90,744 µm	181,488 µm				
7	CIR4	90,307 µm	180,615 µm				
8	CIR5	93,09 µm	186,18 µm				
9							

### Limitations:

- Report tool are designed to work with media files created by JENOPTIK GRYPHAX® software only.
- During live preview from camera, image size information is shown at Report widget only.
- No measurement meta-data available for images captured without measurement calibration data.